

# Outer Dowsing Offshore Wind

## Environmental Statement

### Chapter 17 Seascape, Landscape and Visual

#### Volume 2 Figures

#### Part 2 of 3

Date: March 2024

Document Reference: 6.2.17

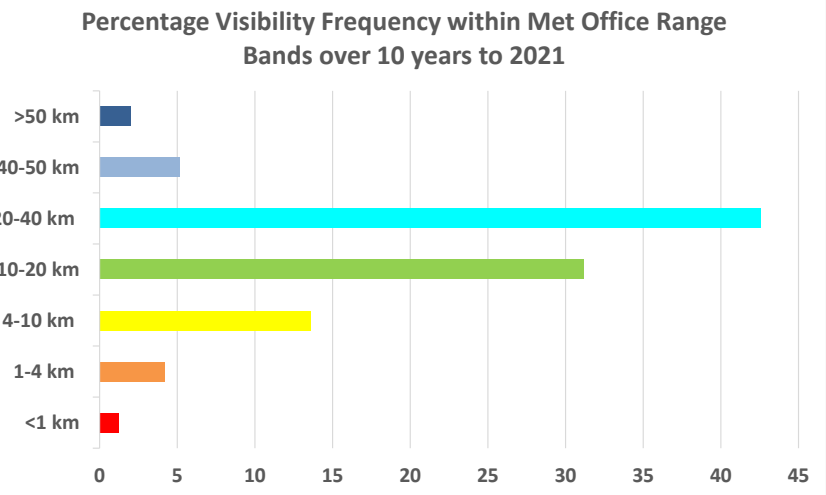
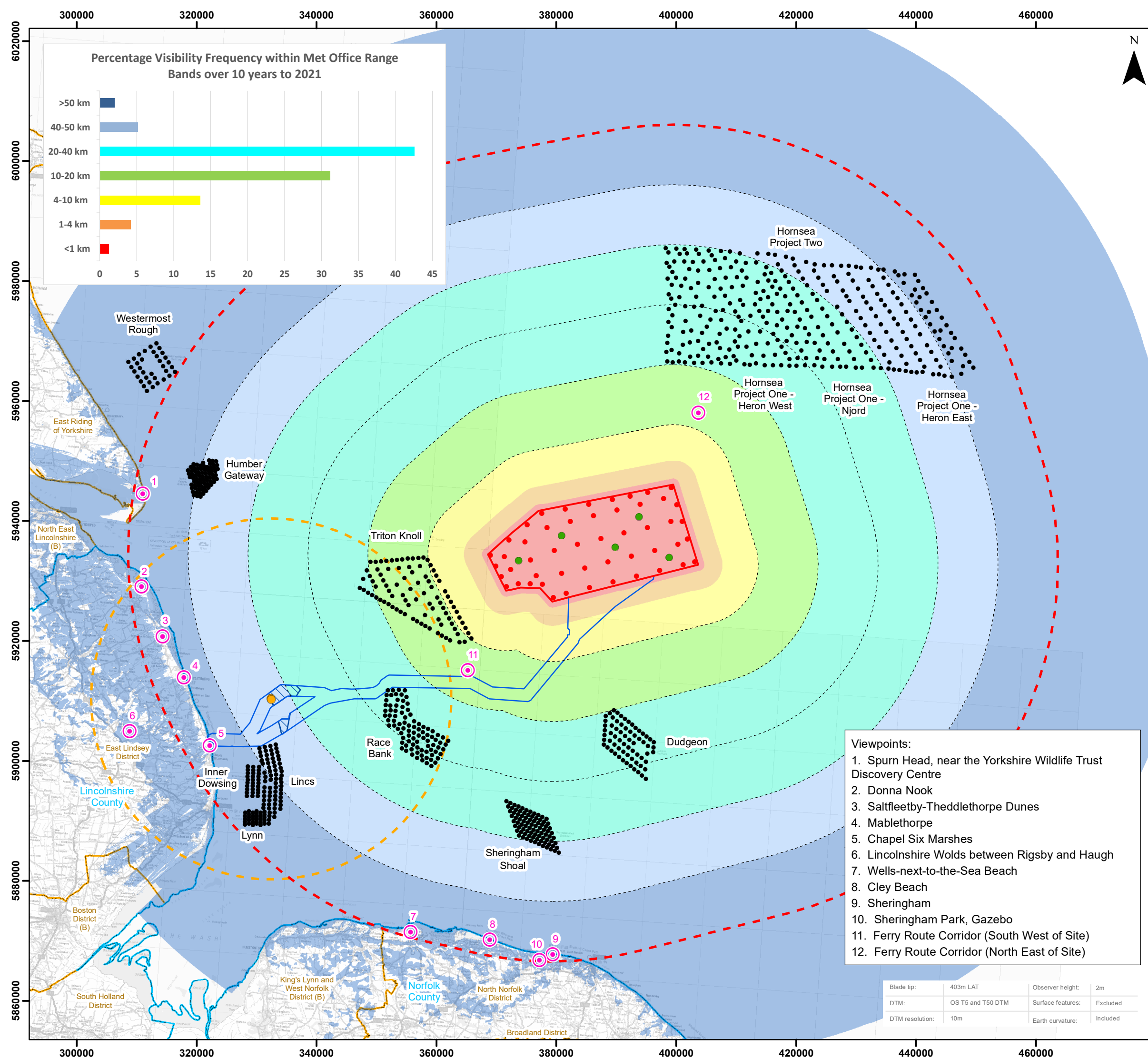
Pursuant to APFP Regulation: 5(2)(a)

Rev: 1.0

Company:	<b>Outer Dowsing Offshore Wind</b>	Asset:	<b>Whole Asset</b>			
Project:	<b>Whole Wind Farm</b>	Sub Project/Package:	Whole Asset			
Document Title or Description:	Chapter 17 Seascape, Landscape and Visual Figures					
Internal Document Number:	PP1-ODOW-DEV-CS-FIG-0017	3 <sup>rd</sup> Party Doc No (If applicable):	N/A			
Outer Dowsing Offshore Wind accepts no liability for the accuracy or completeness of the information in this document nor for any loss or damage arising from the use of such information.						
<b>Rev No.</b>	<b>Date</b>	<b>Status / Reason for Issue</b>	<b>Author</b>	<b>Checked by</b>	<b>Reviewed by</b>	<b>Approved by</b>
01	March 2024	DCO Application	GoBe	GoBe	Shepherd & Wedderburn	Outer Dowsing

## Table of Figures

- Figure 17.13 Array Area Blade Tip ZTV with Visibility Range (document reference 6.2.17.13)
- Figure 17.14 Offshore Reactive Compensation Platforms (ORCPs) ZTV (document reference 6.2.17.14)
- Figure 17.15 Offshore Reactive Compensation Platforms (ORCPs) ZTV with landscape character and designations (document reference 6.2.17.15)
- Figure 17.16 Offshore Reactive Compensation Platforms (ORCPs) ZTV with Surface Feature Screening (document reference 6.2.17.16)
- Figure 17.17 Offshore Reactive Compensation Platforms (ORCPs) ZTV with Surface Feature Screening and landscape character and designations (document reference 6.2.17.17)
- Figure 17.18 Baseline Lighting (document reference 6.2.17.18)
- Figure 17.19 Baseline Lighting (ORCPs) (document reference 6.2.17.19)
- Figure 17.20 Artificial Nesting Structure Search Area ZTV (Document Reference: 6.2.17.20)
- Figure 17.21 Cumulative Projects (document reference 6.2.17.21)
- Figure 17.22 Cumulative ZTV - Hornsea Project Four (document reference 6.2.17.22)
- Figure 17.23 Cumulative ZTV - Sheringham Shoal Extension (document reference 6.2.17.23)
- Figure 17.24 Cumulative ZTV - Dudgeon Extension (document reference 6.2.17.24)



### Legend

- Viewpoints
- Indicative Turbine Locations
- Indicative Offshore Platforms
- Indicative Offshore Reactive Compensation Platform (ORCP)
- Array Area
- Offshore Export Cable Corridor (ECC)
- Offshore Reactive Compensation Platform (ORCP) Area
- 10km Radii
- 60km Study Area
- Offshore Reactive Compensation Platform (ORCP) 30km Study Area
- County Boundary
- District / Unitary Authority Boundary

Cumulative Wind Farm Status:

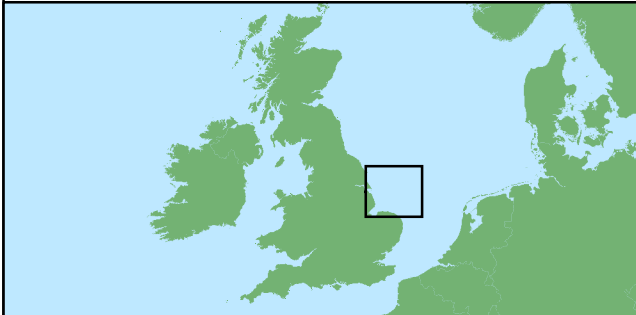
- Operational

Met Office Visibility Range

- < 1km Very Poor Visibility
- 1 - 4km Poor Visibility
- 4 - 10km Moderate Visibility
- 10 - 20km Good Visibility
- 20 - 40km Very Good Visibility
- 40 - 50km Excellent Visibility
- > 50km Excellent Visibility

- ### Viewpoints:
- Spurn Head, near the Yorkshire Wildlife Trust Discovery Centre
  - Donna Nook
  - Saltfleetby-Theddlethorpe Dunes
  - Mablethorpe
  - Chapel Six Marshes
  - Lincolnshire Wolds between Rigsby and Haugh
  - Wells-next-to-the-Sea Beach
  - Cley Beach
  - Sheringham
  - Sheringham Park, Gazebo
  - Ferry Route Corridor (South West of Site)
  - Ferry Route Corridor (North East of Site)

Blade tip:	403m LAT	Observer height:	2m
DTM:	OS T5 and T50 DTM	Surface features:	Excluded
DTM resolution:	10m	Earth curvature:	Included



Coordinate System: WGS 1984 UTM Zone 31N

0 5 10 15 20 km

Scale: 1:600,000

A3 Page Size

Environmental Statement

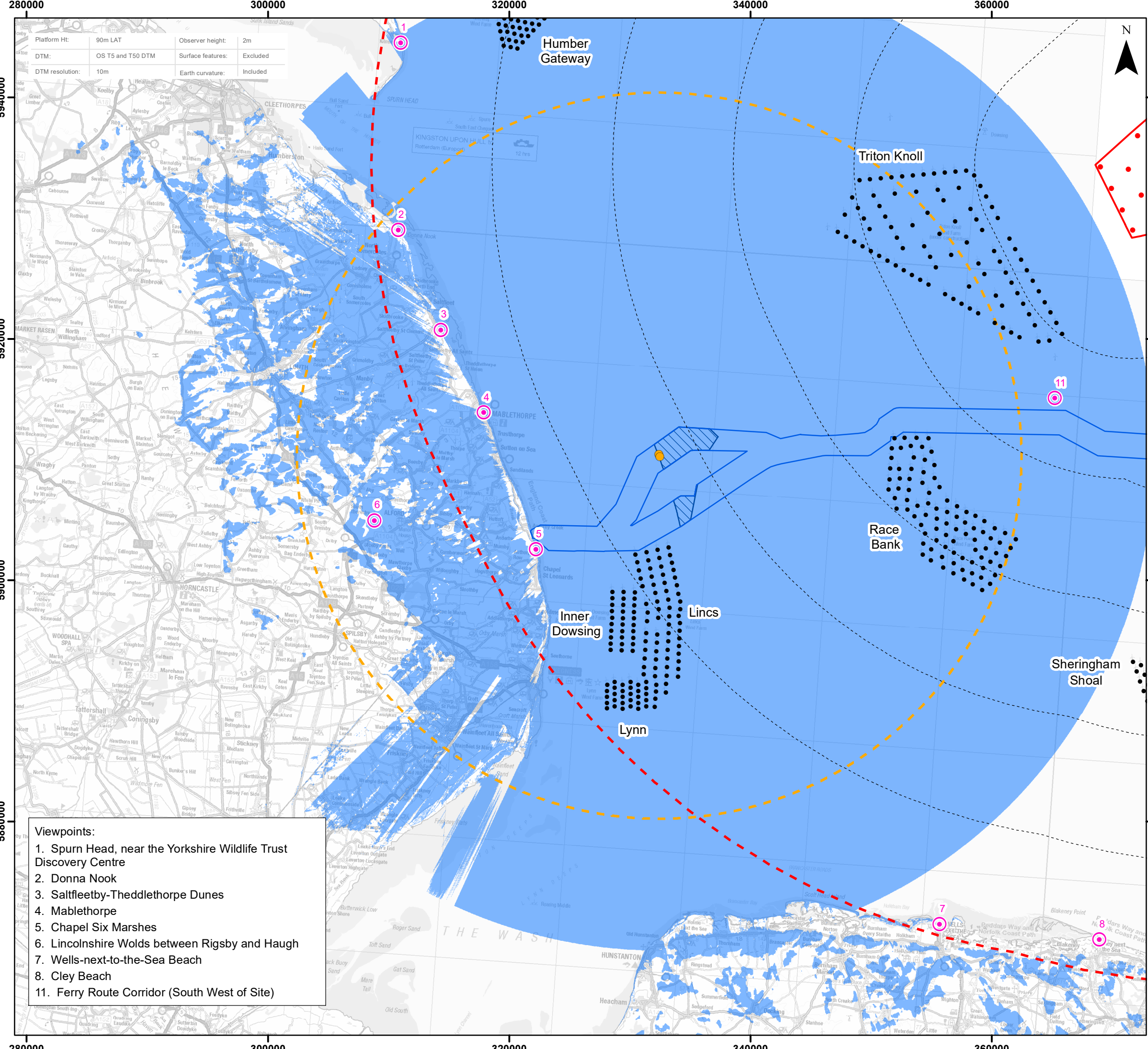
Array Area Blade Tip ZTV with Visibility Range

Figure 17.13

Date: 12/03/2024  
 Produced By: OPEN  
 Revision: v0.4

Contains ESRI Basemapping:  
 optimised environments  
 PART OF SLR

Document Path: P:\2021\12\1613\_OuterDowsing\GIS\211613\_GTR4\ES\OFFSHORE\0536\00012\_0688\_0\_211613\_ODOW\_ES\_SLVIA\_Fig17.13\_VisRange.mxd



- Viewpoints:**
1. Spurn Head, near the Yorkshire Wildlife Trust Discovery Centre
  2. Donna Nook
  3. Saltfleetby-Theddlethorpe Dunes
  4. Mablethorpe
  5. Chapel Six Marshes
  6. Lincolnshire Wolds between Rigsby and Haugh
  7. Wells-next-to-the-Sea Beach
  8. Cley Beach
  11. Ferry Route Corridor (South West of Site)

**Legend**

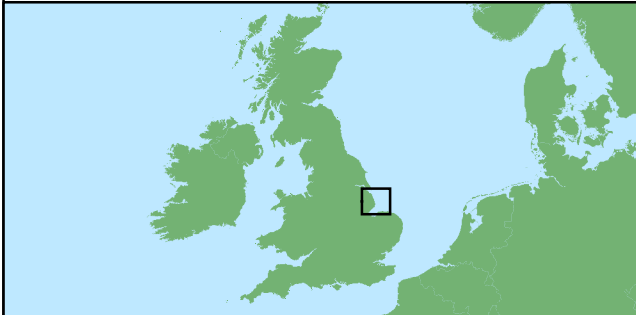
- Viewpoints
- Indicative Turbine Locations
- Indicative Offshore Reactive Compensation Platform (ORCP)
- Array Area
- Offshore Export Cable Corridor (ECC)
- Offshore Reactive Compensation Platform (ORCP) Area
- 10km Radii
- 60km Study Area
- Offshore Reactive Compensation Platform (ORCP) 30km Study Area

Cumulative Wind Farm Status:

- Operational

ORCPs ZTV

- ORCPs No Theoretical Visibility
- ORCPs Theoretically Visible



Coordinate System: WGS 1984 UTM Zone 31N

0 5 10 km

Scale: 1:300,000

A3 Page Size

Environmental Statement

Offshore Reactive Compensation Platforms (ORCPs) ZTV

Figure 17.14



Date: 12/03/2024

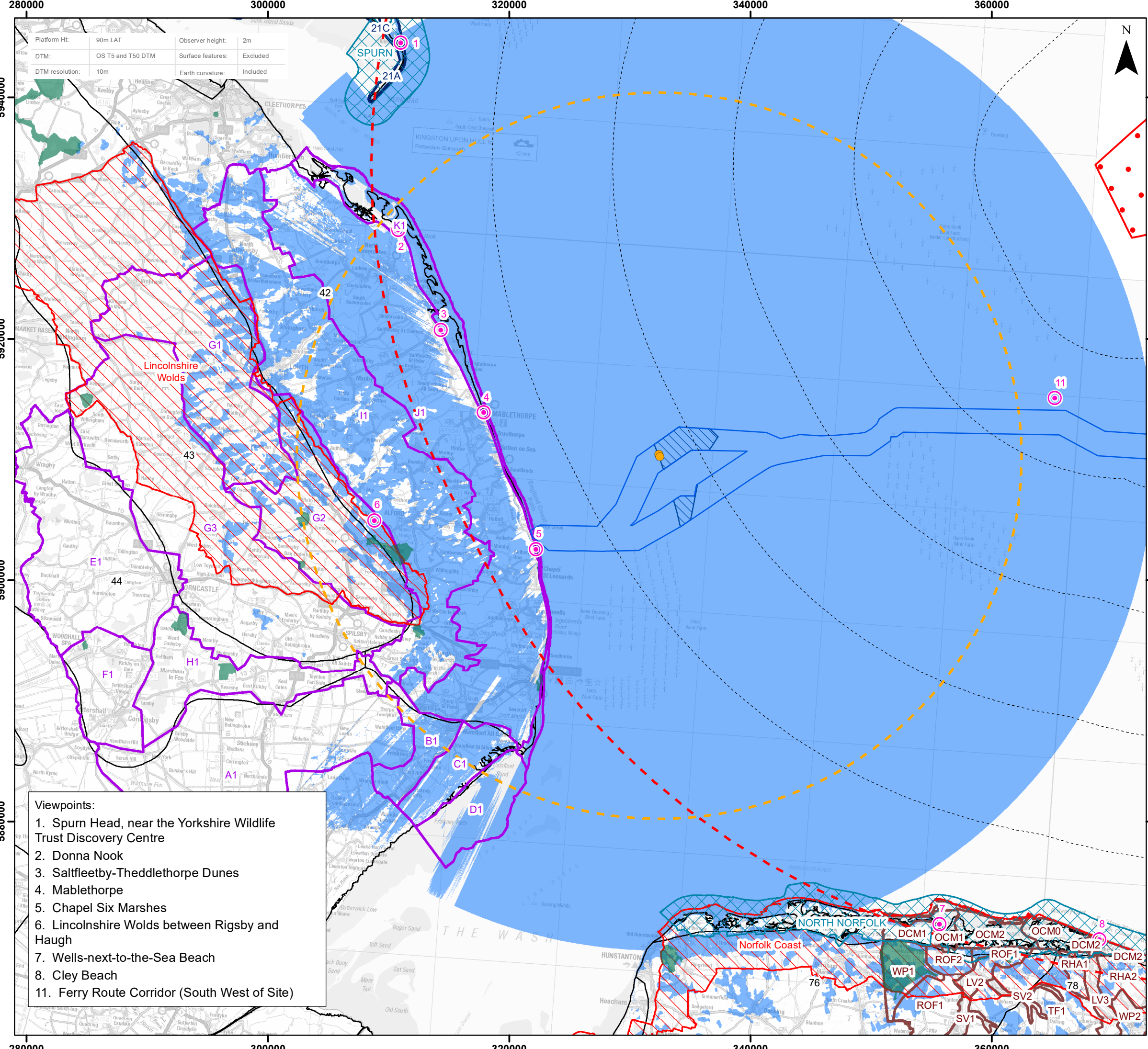
Produced By: OPEN

Revision: v0.4

Contains ESRI Basemapping; optimised environments PART OF SLR

© Crown copyright and database rights (2024) Ordnance Survey 0100031673  
Contains public sector information licensed under the Open Government Licence v3.0.

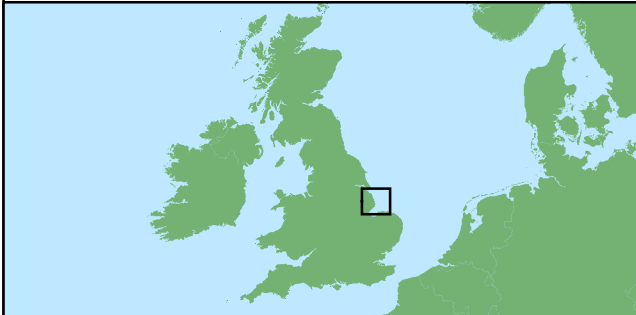
Document Path: P:\2021\21613\_OuterDowsing\GIS\21613\_GTR4\ES\OFFSHORE\05366\00012\_0669\_0\_21613\_ODOW\_ES\_SIVIA\_Fig17.14\_ORCPs\_ZTV\_30km.mxd



- Viewpoints:**
1. Spurn Head, near the Yorkshire Wildlife Trust Discovery Centre
  2. Donna Nook
  3. Saltfleetby-Theddlethorpe Dunes
  4. Mablethorpe
  5. Chapel Six Marshes
  6. Lincolnshire Wolds between Rigsby and Haugh
  7. Wells-next-to-the-Sea Beach
  8. Cley Beach
  11. Ferry Route Corridor (South West of Site)

### Legend

- Viewpoints
- Indicative Turbine Locations
- Indicative Offshore Reactive Compensation Platform (ORCP)
- Array Area
- Offshore Export Cable Corridor (ECC)
- Offshore Reactive Compensation Platform (ORCP) Area
- 10km Radii
- 60km Study
- Offshore Reactive Compensation Platform (ORCP) 30km Study Area
- National Parks
- Heritage Coast
- Parks and Gardens
- Areas of Outstanding Natural Beauty
- East Riding of Yorkshire LCA (2018)
- East Lindsey LCA (2011)
- North Norfolk LCA (2018)
- Natural England - National Character Areas
- ORCPs ZTV**
- ORCPs No Theoretical Visibility
- ORCPs Theoretically Visible



Coordinate System: WGS 1984 UTM Zone 31N  
 0 5 10 km  
 Scale: 1:300,000 A3 Page Size

Environmental Statement  
 Offshore Reactive Compensation Platforms (ORCPs) ZTV with landscape character and designations  
 Figure 17.15

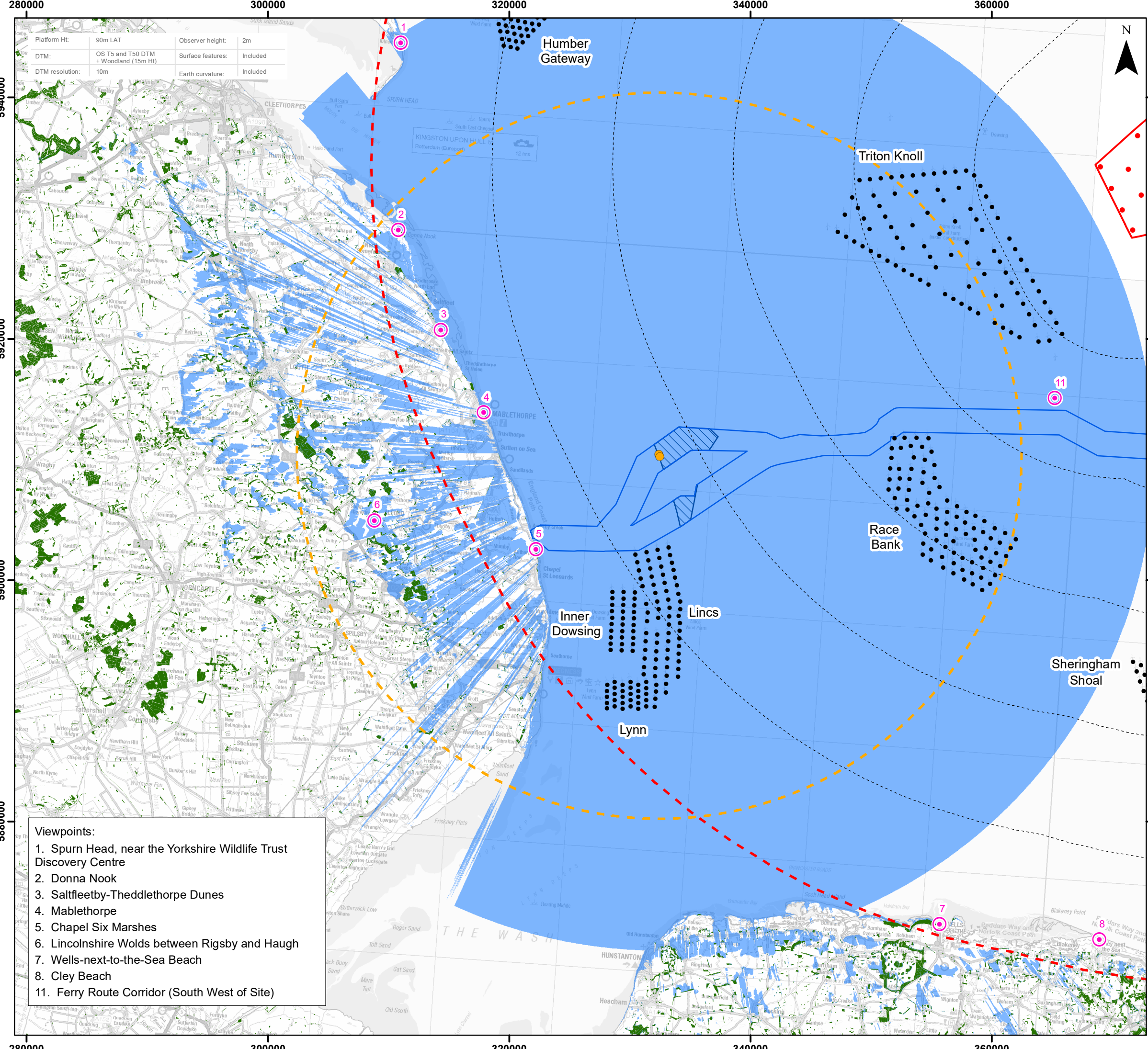


Date: 12/03/2024  
 Produced By: OPEN  
 Revision: v0.4

**open** optimised environments  
 PART OF SLR

© Crown copyright and database rights (2024) Ordnance Survey 0100031673  
 © Natural England copyright. Contains Ordnance Survey data © Crown copyright and database right (2024). Contains public sector information licensed under the Open Government Licence v3.0.

Document Path: P:\2021\21613 OuterDowsing\GIS\21613\_GTR4ES\OFFSHORE\0536\00012\_0670\_0\_21613\_ODOW\_ES\_SILVA\_Fig17.15\_ORCPs\_ZTV\_LD\_LCA\_30km.mxd



280000 300000 320000 340000 360000

5940000

5920000

5900000

5880000

280000 300000 320000 340000 360000



5940000

5920000

5900000

5880000

Platform Ht:	90m LAT	Observer height:	2m
DTM:	OS T5 and T50 DTM + Woodland (15m Ht)	Surface features:	Included
DTM resolution:	10m	Earth curvature:	Included

- Viewpoints:**
1. Spurn Head, near the Yorkshire Wildlife Trust Discovery Centre
  2. Donna Nook
  3. Saltfleetby-Theddlethorpe Dunes
  4. Mablethorpe
  5. Chapel Six Marshes
  6. Lincolnshire Wolds between Rigby and Haugh
  7. Wells-next-to-the-Sea Beach
  8. Cley Beach
  11. Ferry Route Corridor (South West of Site)

### Legend

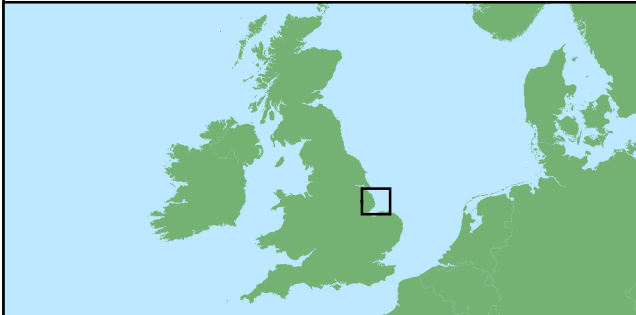
- Viewpoints
- Indicative Turbine Locations
- Indicative Offshore Reactive Compensation Platform (ORCP)
- Array Area
- Offshore Export Cable Corridor (ECC)
- Offshore Reactive Compensation Platform (ORCP) Area
- 10km Radii
- 60km Study
- Offshore Reactive Compensation Platform (ORCP) 30km Study Area

**Cumulative Wind Farm Status:**

- Operational
- Woodland

**ORCPs Screening ZTV**

- ORCPs No Theoretical Visibility
- ORCPs Theoretically Visible



Coordinate System: WGS 1984 UTM Zone 31N

0 5 10 km

Scale: 1:300,000

A3 Page Size

Environmental Statement

Offshore Reactive Compensation Platforms (ORCPs) ZTV with Surface Feature Screening

Figure 17.16

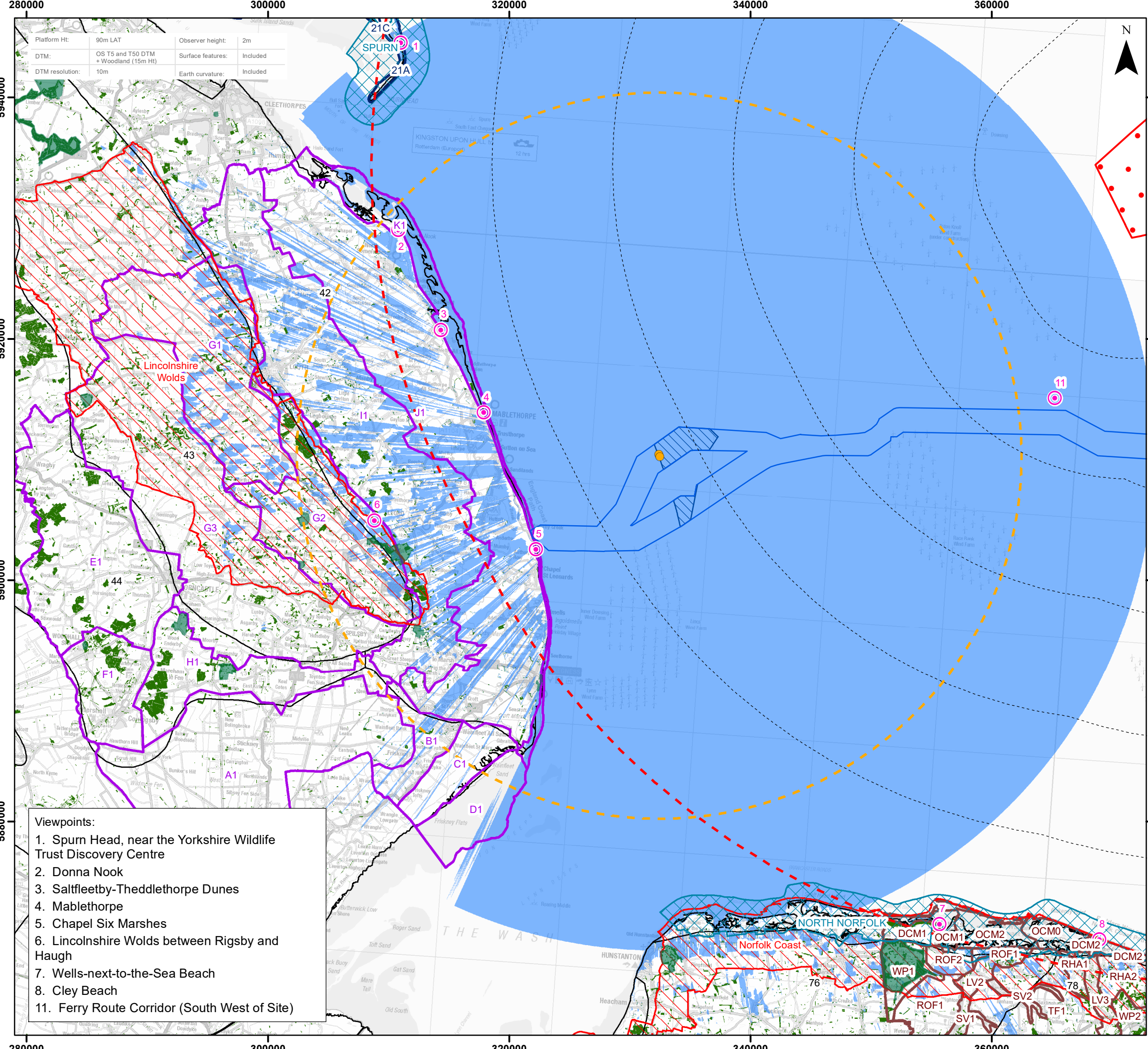


Date: 12/03/2024  
 Produced By: OPEN  
 Revision: v0.4

Contains ESRI Basemapping;  
 optimised environments  
 PART OF SLR

© Crown copyright and database rights (2024) Ordnance Survey 0100031673  
 Contains public sector information licensed under the Open Government Licence v3.0.

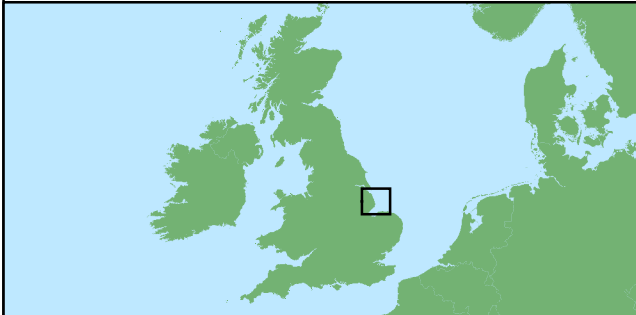
Document Path: P:\2021\12\1613 OuterDowsing\GIS\211613\_GTR4\ES\OFFSHORE\05366\00012\_0671\_0\_211613\_ODOW\_ES\_SVIA\_Fig17-16\_ORCPs\_Screening\_ZTV\_30km.mxd



- Viewpoints:**
1. Spurn Head, near the Yorkshire Wildlife Trust Discovery Centre
  2. Donna Nook
  3. Saltfleetby-Theddlethorpe Dunes
  4. Mablethorpe
  5. Chapel Six Marshes
  6. Lincolnshire Wolds between Rigsby and Haugh
  7. Wells-next-to-the-Sea Beach
  8. Cley Beach
  11. Ferry Route Corridor (South West of Site)

### Legend

- Viewpoints
- Indicative Turbine Locations
- Indicative Offshore Reactive Compensation Platform (ORCP)
- Array Area
- Offshore Export Cable Corridor (ECC)
- Offshore Reactive Compensation Platform (ORCP) Area
- 10km Radii
- 60km Study
- Offshore Reactive Compensation Platform (ORCP) 30km Study Area
- National Parks
- Heritage Coast
- Parks and Gardens
- Areas of Outstanding Natural Beauty
- East Riding of Yorkshire LCA (2018)
- East Lindsey LCA (2011)
- North Norfolk LCA (2018)
- Natural England - National Character Areas
- Woodland
- ORCPs Screening ZTV
  - ORCPs No Theoretical Visibility
  - ORCPs Theoretically Visible



Coordinate System: WGS 1984 UTM Zone 31N  
 0 5 10 km  
 Scale: 1:300,000  
 A3 Page Size

**Environmental Statement**

Offshore Reactive Compensation Platforms (ORCPs) ZTV with Surface Feature Screening and landscape character and designations  
 Figure 17.17



Date: 12/03/2024  
 Produced By: OPEN  
 Revision: v0.4

Contains ESRI Basemapping;  
 PART OF SLR

© Crown copyright and database rights (2024) Ordnance Survey 0100031673  
 © Natural England copyright. Contains Ordnance Survey data © Crown copyright and database right (2024). Contains public sector information licensed under the Open Government Licence v3.0.

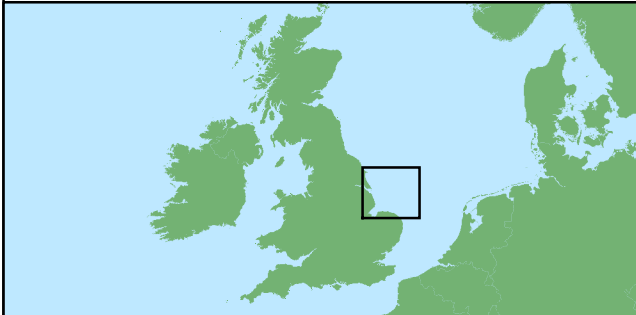
Document Path: P:\2021\21613 OuterDowsing\GIS\21613\_GTR4\ES\OFFSHORE\0536\00012\_0672\0\_21613\_ODOW\_ES\_SVIA\_Fig17.17\_ORCPs\_Screening\_ZTV\_LD\_LCA\_30km.mxd

**Legend**

- Viewpoints
- Indicative Turbine Locations
- Indicative Offshore Platforms
- Indicative Offshore Reactive Compensation Platform (ORCP)
- Array Area
- Offshore Export Cable Corridor (ECC)
- Offshore Reactive Compensation Platform (ORCP) Area
- 10km Radii
- 60km Study Area
- Offshore Reactive Compensation Platform (ORCP) 30km Study Area
- National Parks
- Heritage Coast
- Areas of Outstanding Natural Beauty
- Dark Sky Discovery Site

**Night Light Pollution**  
(NanoWatts / cm<sup>2</sup> / sr)

- >32 (high)
- 16 - 32
- 8 - 16
- 4 - 8
- 2 - 4
- 1 - 2
- 0.5 - 1
- 0.25 - 0.5
- < 0.25 (low)



Coordinate System: WGS 1984 UTM Zone 31N


0 5 10 15 20 km

**Scale: 1:600,000** A3 Page Size

**Environmental Statement**

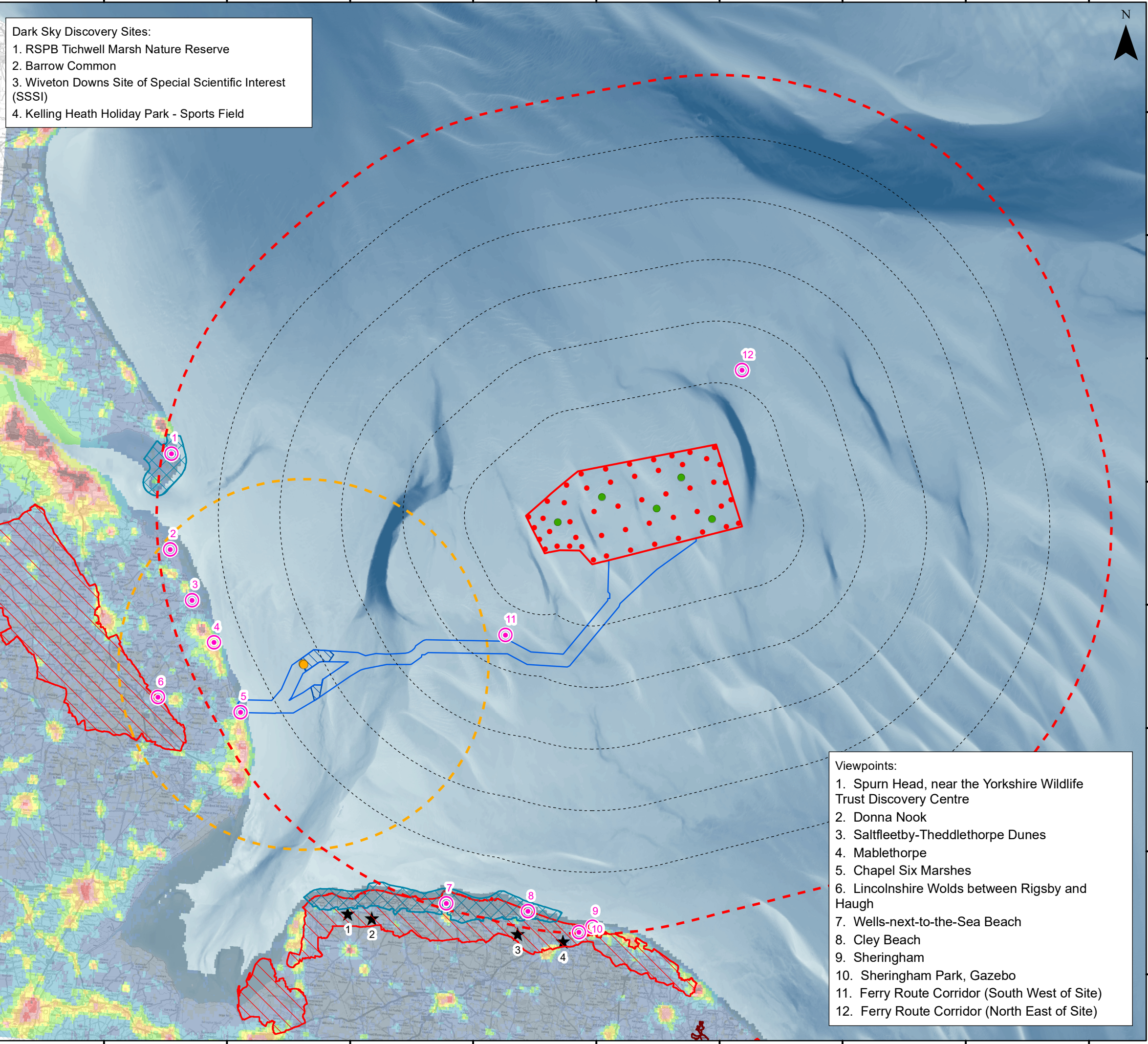
Baseline Lighting

Figure 17.18



Date: 12/03/2024  
Produced By: OPEN  
Revision: v0.4

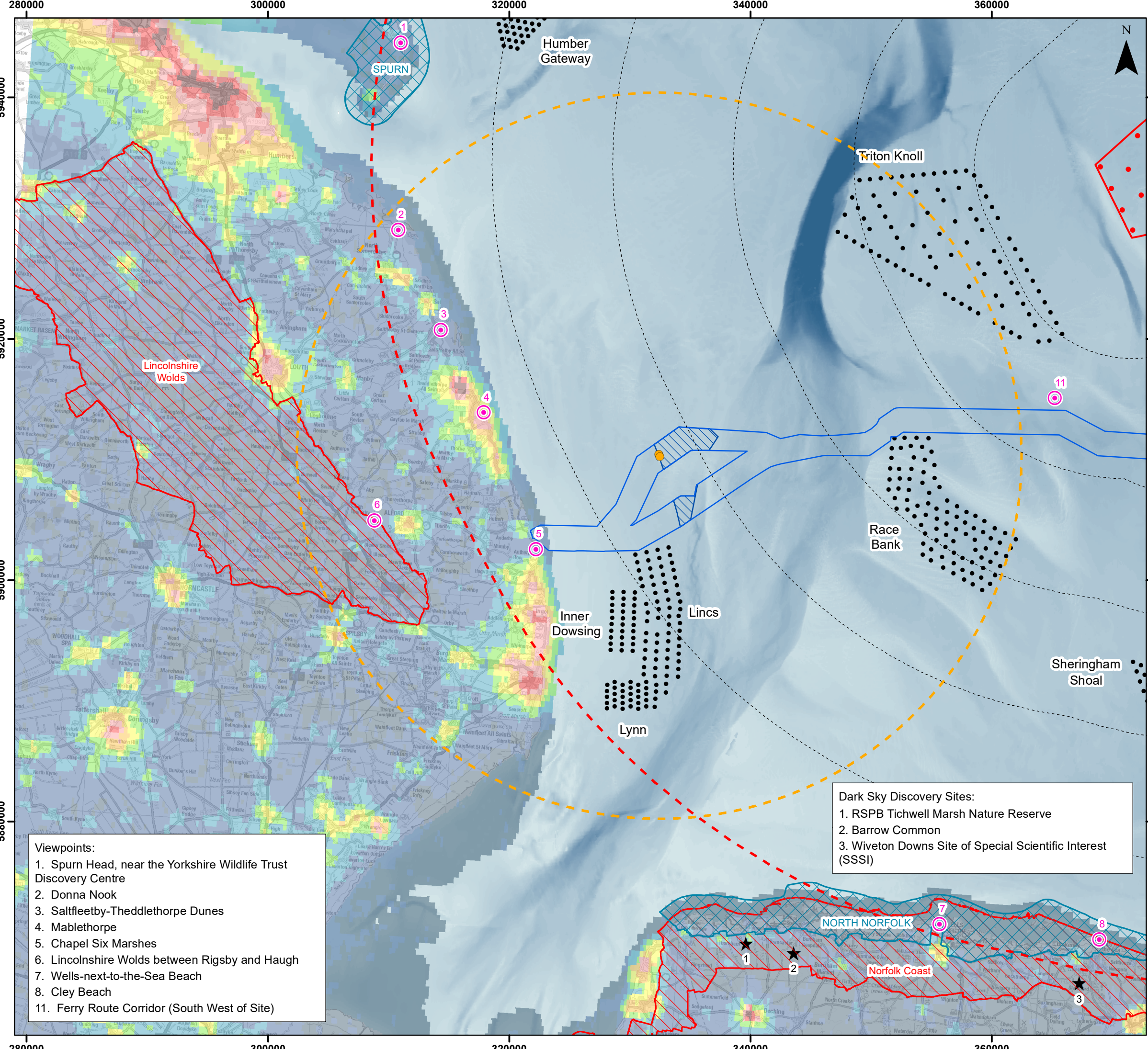
Contains ESRI Basemapping;  
optimised environments  
PART OF SLR



- Dark Sky Discovery Sites:**
1. RSPB Tichwell Marsh Nature Reserve
  2. Barrow Common
  3. Wiveton Downs Site of Special Scientific Interest (SSSI)
  4. Kelling Heath Holiday Park - Sports Field

- Viewpoints:**
1. Spurn Head, near the Yorkshire Wildlife Trust Discovery Centre
  2. Donna Nook
  3. Saltfleetby-Theddlethorpe Dunes
  4. Mablethorpe
  5. Chapel Six Marshes
  6. Lincolnshire Wolds between Rigsby and Haugh
  7. Wells-next-to-the-Sea Beach
  8. Cley Beach
  9. Sheringham
  10. Sheringham Park, Gazebo
  11. Ferry Route Corridor (South West of Site)
  12. Ferry Route Corridor (North East of Site)





### Legend

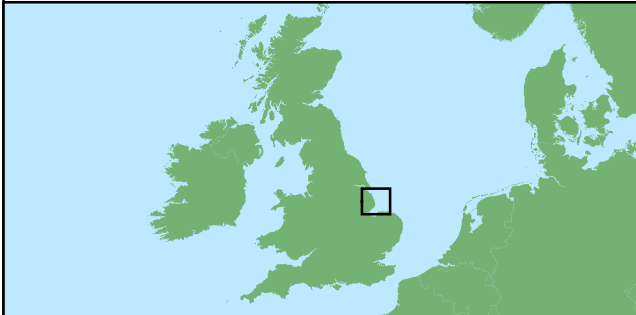
- Viewpoints
- Indicative Turbine Locations
- Indicative Offshore Reactive Compensation Platform (ORCP)
- Array Area
- Offshore Export Cable Corridor (ECC)
- Offshore Reactive Compensation Platform (ORCP) Area
- 10km Radii
- 60km Study Area
- Offshore Reactive Compensation Platform (ORCP) 30km Study Area
- Heritage Coast
- Areas of Outstanding Natural Beauty

Cumulative Wind Farm Status:

- Operational
- Dark Sky Discovery Site

Night Light Pollution  
(NanoWatts / cm<sup>2</sup> / sr)

- >32 (high)
- 16 - 32
- 8 - 16
- 4 - 8
- 2 - 4
- 1 - 2
- 0.5 - 1
- 0.25 - 0.5
- < 0.25 (low)



Coordinate System: WGS 1984 UTM Zone 31N

0 5 10 km

Scale: 1:300,000

A3 Page Size

Dark Sky Discovery Sites:

1. RSPB Tichwell Marsh Nature Reserve
2. Barrow Common
3. Wiveton Downs Site of Special Scientific Interest (SSSI)

Viewpoints:

1. Spurn Head, near the Yorkshire Wildlife Trust Discovery Centre
2. Donna Nook
3. Saltfleetby-Theddlethorpe Dunes
4. Mablethorpe
5. Chapel Six Marshes
6. Lincolnshire Wolds between Rigsby and Haugh
7. Wells-next-to-the-Sea Beach
8. Cley Beach
11. Ferry Route Corridor (South West of Site)

Environmental Statement

Baseline Lighting (ORCPs)

Figure 17.19

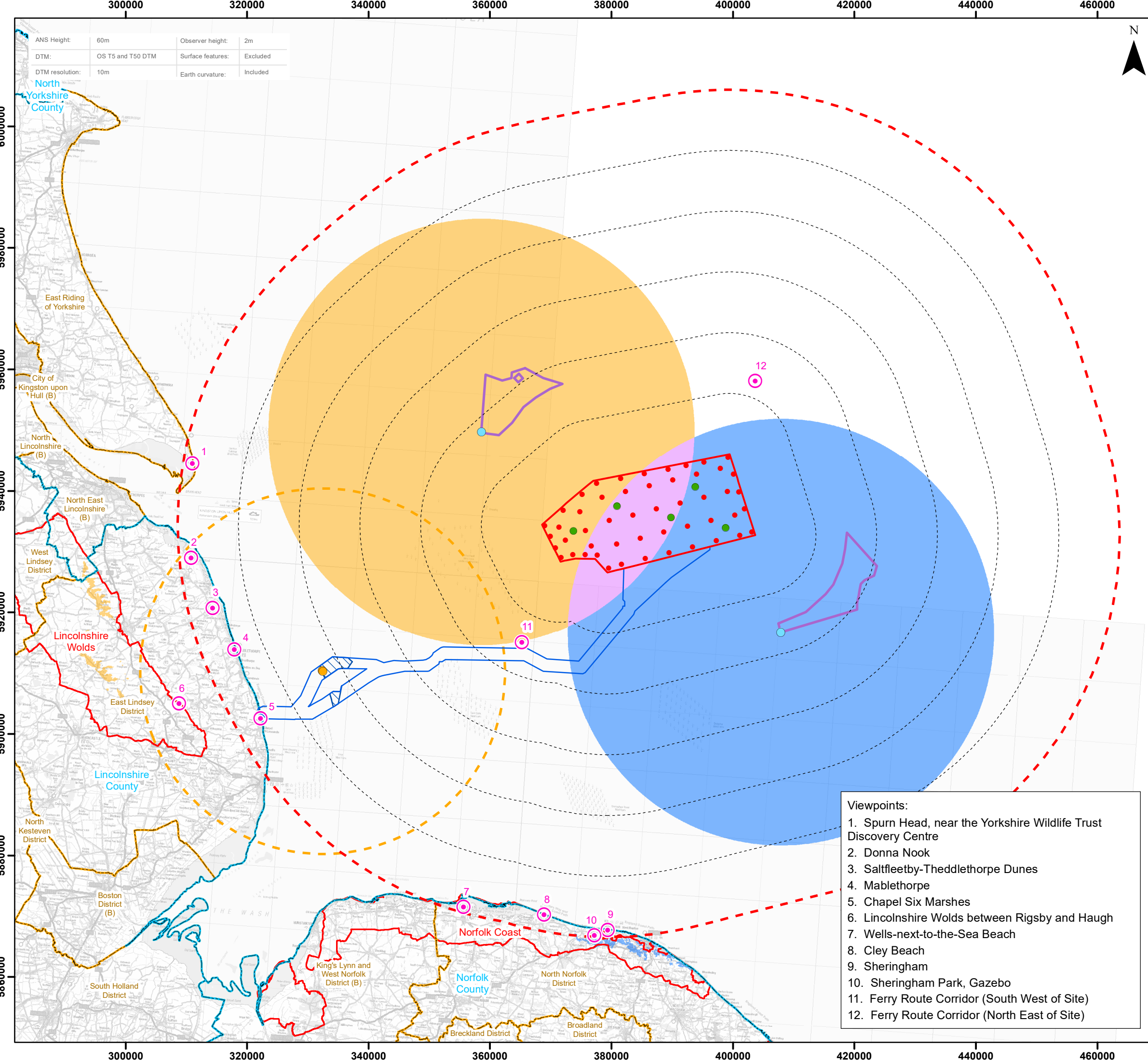


Date: 12/03/2024  
 Produced By: OPEN  
 Revision: v0.4

Contains ESRI Basemapping;  
 optimised environments  
 PART OF SLR

© Crown copyright and database rights (2024) Ordnance Survey 0100031673. © Natural England copyright. © EMODnet Bathymetry Consortium (2022): EMODnet Digital Bathymetry. © Earth Observation Group, NOAA National Geophysical Data center. Data processed by LUC on behalf of CPRE. <https://doi.org/10.12770/bb6a87dd-e579-4036-abe1-e649cea9881a>

Document Path: P:\2021\21613\_OuterDowsing\GIS\21613\_GTR4\ES\OFFSHORE\05366\00012\_0674\0\_21613\_ODOW\_ES\_SVIA\_Fig17.19\_Baseline\_Lighting\_ORCPs\_30km.mxd



- ### Legend
- Indicative Turbine Locations
  - Indicative Offshore Platforms
  - Indicative Offshore Reactive Compensation Platform (ORCP)
  - Indicative Artificial Nesting Structure (ANS)
  - ▭ Array Area
  - ▭ Offshore Export Cable Corridor (ECC)
  - ▭ Offshore Reactive Compensation Platform (ORCP) Area
  - ⋯ 10km Radii
  - ⋯ 60km Study
  - ⋯ Offshore Reactive Compensation Platform (ORCP) 30km Study Area
  - ▭ Artificial Nesting Structure (ANS) Area
  - ▭ County Boundary
  - ▭ District / Unitary Authority Boundary
  - Cumulative Zone of Theoretical Visibility**
  - ▭ ANS 1 (North) WCS Position Theoretical Visibility
  - ▭ ANS 2 (South) WCS Position Theoretical Visibility
  - ▭ Combined ANS WCS Theoretical

- Viewpoints:**
1. Spurn Head, near the Yorkshire Wildlife Trust Discovery Centre
  2. Donna Nook
  3. Saltfleetby-Theddlethorpe Dunes
  4. Mablethorpe
  5. Chapel Six Marshes
  6. Lincolnshire Wolds between Rigsby and Haugh
  7. Wells-next-to-the-Sea Beach
  8. Cley Beach
  9. Sheringham
  10. Sheringham Park, Gazebo
  11. Ferry Route Corridor (South West of Site)
  12. Ferry Route Corridor (North East of Site)

Coordinate System: WGS 1984 UTM Zone 31N  
 0 5 10 15 20 km  
 Scale: 1:600,000  
 A3 Page Size

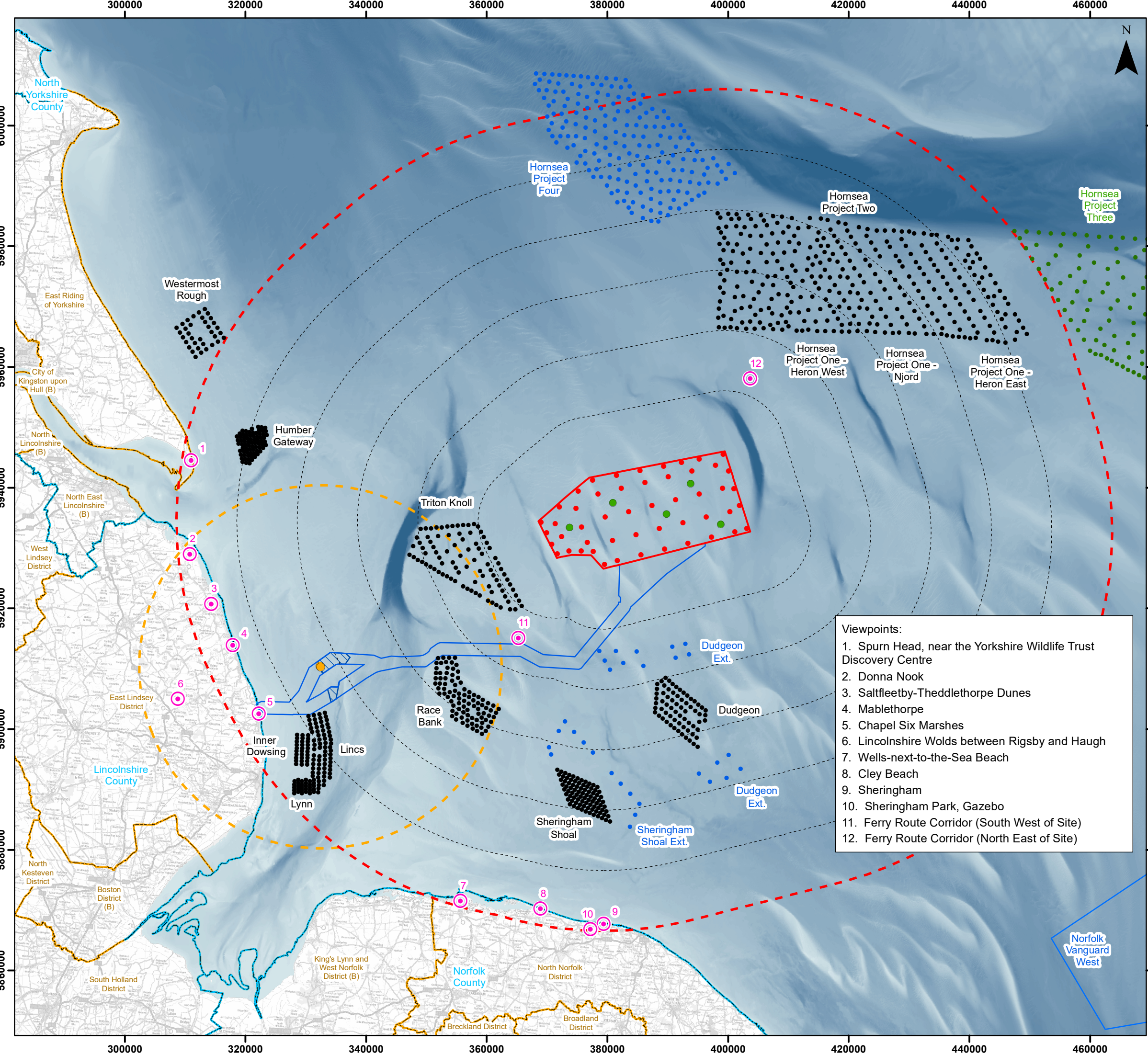
Environmental Statement  
 Artificial Nesting Structure Search Area ZTV  
 (WCS Position North and South) (A3)



Date: 12/03/2024  
 Produced By: OPEN  
 Revision: v0.1

Contains ESRI Basemapping;  
 optimised environments  
 PART OF SLR

Document Path: P:\2021\12\1613\_OuterDowsing\GIS\211613\_GTR4\ES\OFFSHORE\0536\00012\_0927\_0\_211613\_ODOW\_ES\_SIVIA\_Fig17.20\_ANS\_ZTV.mxd



### Legend

- ⊙ Viewpoints
- Indicative Turbine Locations
- Indicative Offshore Platforms
- Indicative Offshore Reactive Compensation Platform (ORCP)
- Array Area
- Offshore Export Cable Corridor (ECC)
- Offshore Reactive Compensation Platform (ORCP) Area
- 10km Radii
- 60km Study
- Offshore Reactive Compensation Platform (ORCP) 30km Study Area
- County Boundary
- District / Unitary Authority Boundary

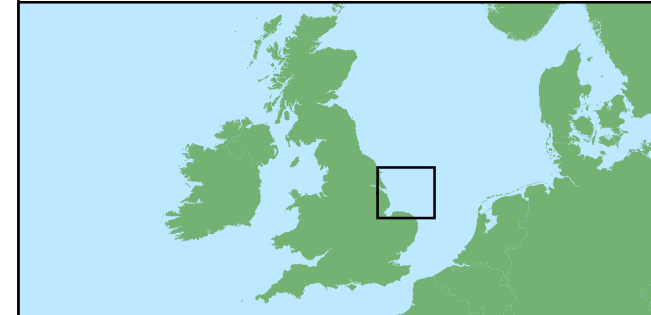
Cumulative Wind Farm Status:

- Operational
- Consented
- Appeal; Application
- Appeal; Application\*

EMODnet DTM for European Sea Regions (m)  
High : 4.23  
Low : -98.28

\*No indicative layout available

- Viewpoints:**
1. Spurn Head, near the Yorkshire Wildlife Trust Discovery Centre
  2. Donna Nook
  3. Saltfleetby-Theddlethorpe Dunes
  4. Mablethorpe
  5. Chapel Six Marshes
  6. Lincolnshire Wolds between Rigsby and Haugh
  7. Wells-next-to-the-Sea Beach
  8. Cley Beach
  9. Sheringham
  10. Sheringham Park, Gazebo
  11. Ferry Route Corridor (South West of Site)
  12. Ferry Route Corridor (North East of Site)



Coordinate System: WGS 1984 UTM Zone 31N  
 0 5 10 15 20 km  
 Scale: 1:600,000  
 A3 Page Size

Environmental Statement  
 Cumulative Projects  
 Figure 17.21

Date: 12/03/2024  
 Produced By: OPEN  
 Revision: v0.4

Contains ESRI Basemapping;  
 optimised environments  
 PART OF SLR

© Crown copyright and database rights (2024) Ordnance Survey 0100031673.  
 Contains public sector information licensed under the Open Government Licence v3.0.  
 © EMODnet Bathymetry Consortium (2022); EMODnet Digital Bathymetry.

Document Path: P:\2021\12\1613 OuterDowsing\GIS\121613\_GTR4\ES\OFFSHORE\0536\00012\_0675\_0\_211613\_ODOW\_ES\_SIVIA\_Fig17.21\_CWF.mxd

**Legend**

- Viewpoints
- Indicative Turbine Locations
- Indicative Offshore Platforms
- Indicative Offshore Reactive Compensation Platform (ORCP)
- Array Area
- Offshore Export Cable Corridor (ECC)
- Offshore Reactive Compensation Platform (ORCP) Area
- 10km Radii
- 60km Study
- Offshore Reactive Compensation Platform (ORCP) 30km Study Area

Cumulative Wind Farm Status:

- Appeal/Application

Cumulative Zone of Theoretical Visibility

- Outer Dowsing Theoretical Visibility
- Hornsea 4 Theoretical Visibility
- Combined Theoretical Visibility

Coordinate System: WGS 1984 UTM Zone 31N

0 5 10 15 20 km

**Scale: 1:600,000**

A3 Page Size

Environmental Statement

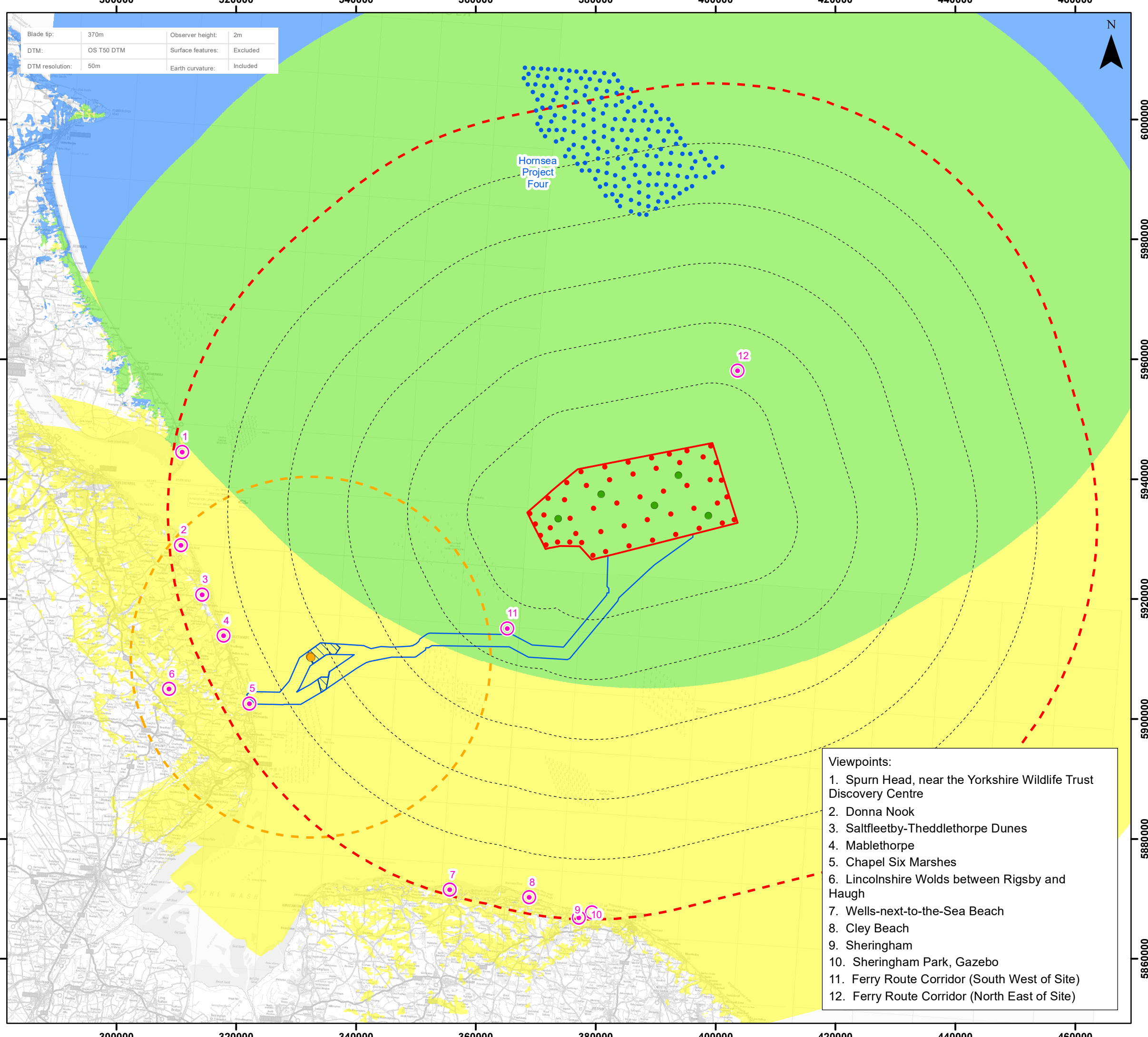
Cumulative ZTV - Hornsea Project Four

Figure 17.22

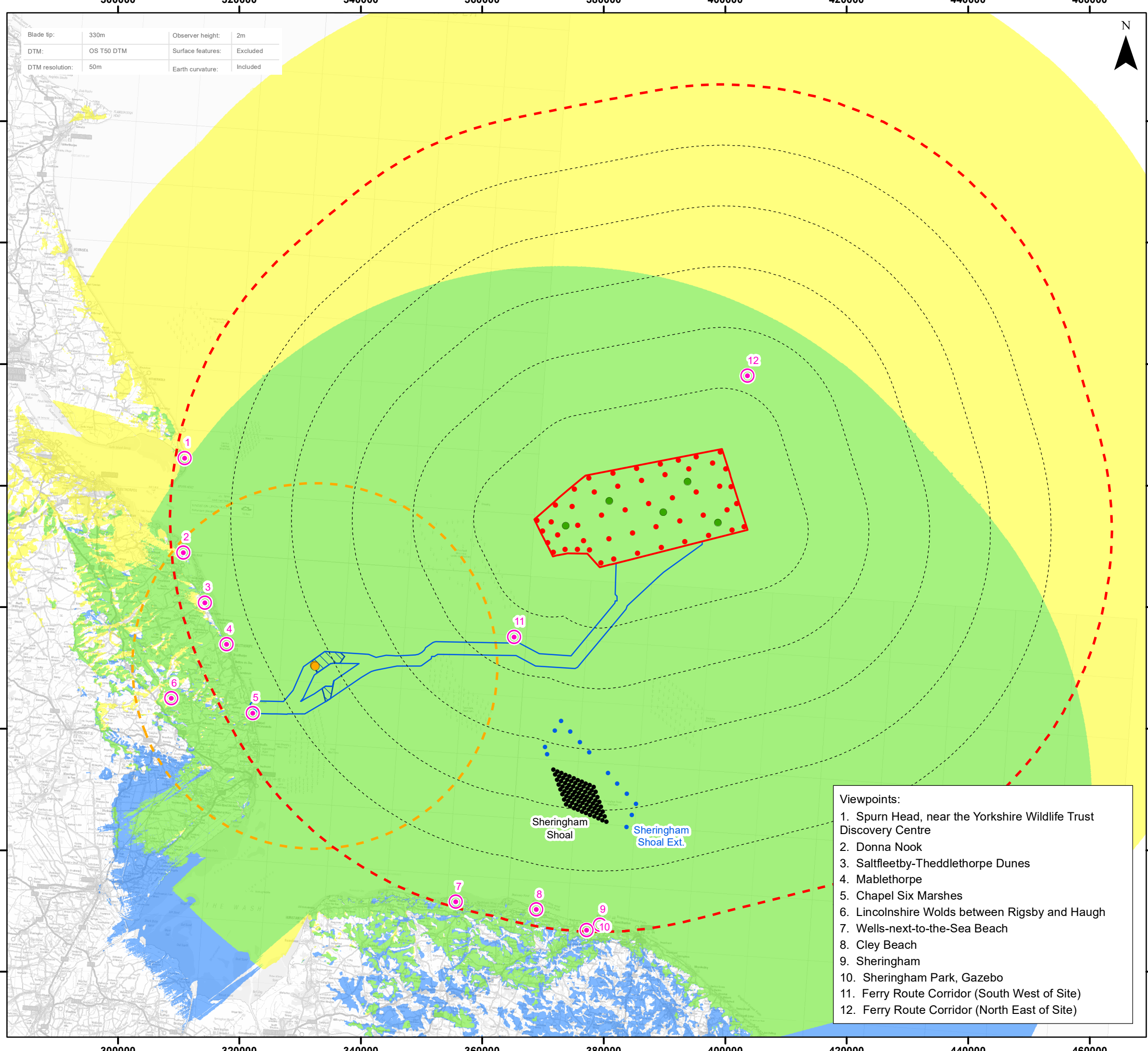
**OUTER DOWSING**  
OFFSHORE WIND

Date: 12/03/2024  
Produced By: OPEN  
Revision: v0.4

Contains ESRI Basemapping;  
optimised environments  
PART OF SLR



Document Path: P:\2021\12\1613 - OuterDowsing\GIS\211613 - GTR4\ES\OFFSHORE\06\00012\_06\76\_0\_211613\_ODOW\_ES\_SLVIA\_Fig17.22\_CZTV\_Hornsea4.mxd



Blade tip:	330m	Observer height:	2m
DTM:	OS T50 DTM	Surface features:	Excluded
DTM resolution:	50m	Earth curvature:	Included

### Legend

- ⊙ Viewpoints
- Indicative Turbine Locations
- Indicative Offshore Platforms
- Indicative Offshore Reactive Compensation Platform (ORCP)
- Array Area
- Offshore Export Cable Corridor (ECC)
- Offshore Reactive Compensation Platform (ORCP) Area
- 10km Radii
- 60km Study Area
- Offshore Reactive Compensation Platform (ORCP) 30km Study Area

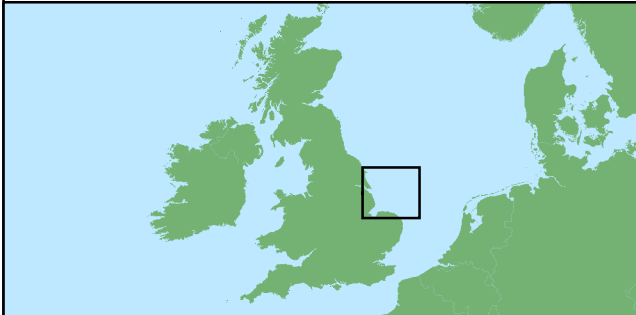
Cumulative Wind Farm Status:

- Operational
- Appeal/Application

Cumulative Zone of Theoretical Visibility

- Outer Dowsing Theoretical Visibility
- Sheringham Shoal Ext Theoretical Visibility
- Combined Theoretical Visibility

- Viewpoints:**
1. Spurn Head, near the Yorkshire Wildlife Trust Discovery Centre
  2. Donna Nook
  3. Saltfleetby-Theddlethorpe Dunes
  4. Mablethorpe
  5. Chapel Six Marshes
  6. Lincolnshire Wolds between Rigsby and Haugh
  7. Wells-next-to-the-Sea Beach
  8. Cley Beach
  9. Sheringham
  10. Sheringham Park, Gazebo
  11. Ferry Route Corridor (South West of Site)
  12. Ferry Route Corridor (North East of Site)



Coordinate System: WGS 1984 UTM Zone 31N  
 0 5 10 15 20 km  
 Scale: 1:600,000  
 A3 Page Size

Environmental Statement  
 Cumulative ZTV - Sheringham Shoal Extension  
 Figure 17.23

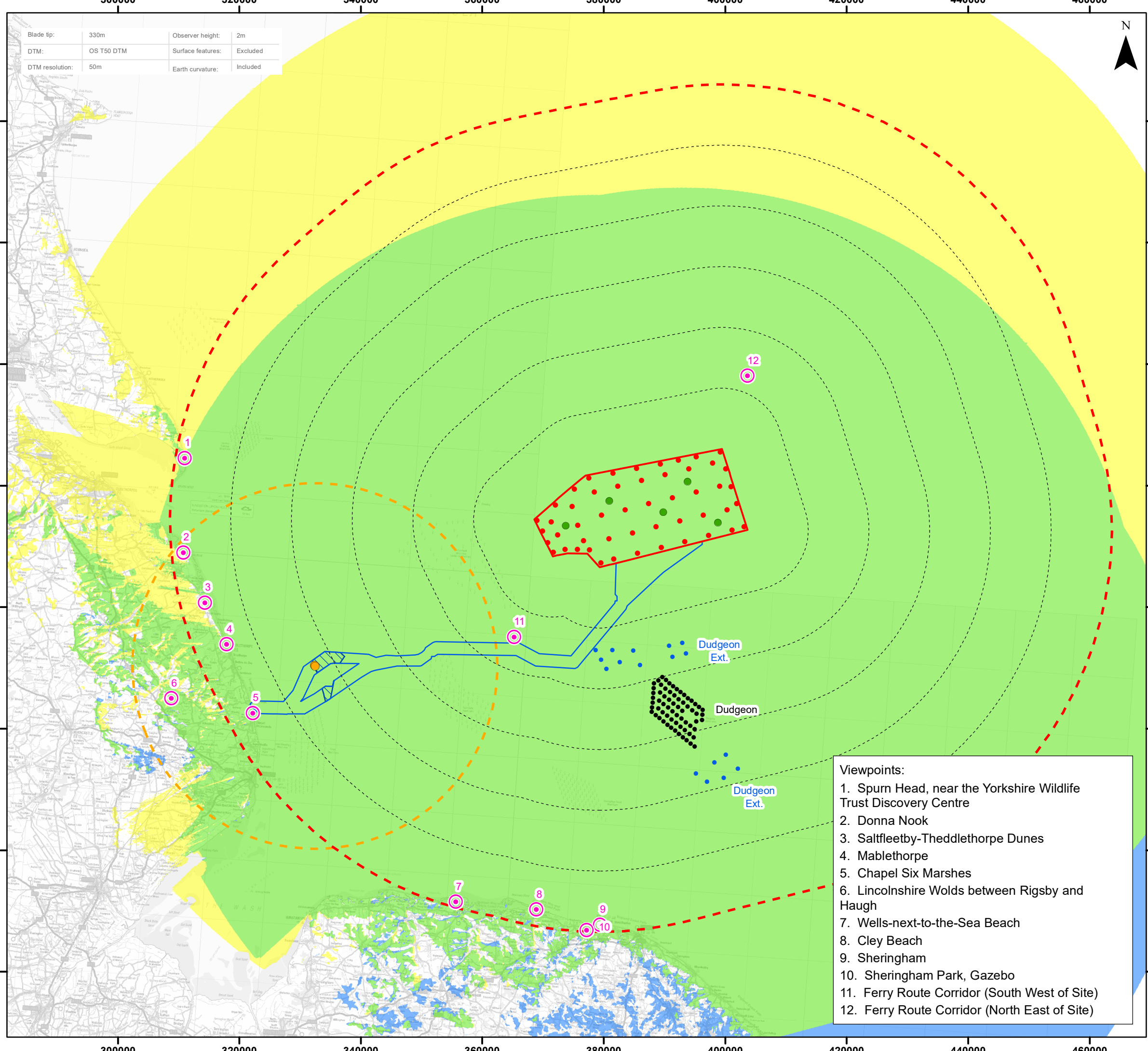


Date: 12/03/2024  
 Produced By: OPEN  
 Revision: v0.4

Contains ESRI Basemapping;  
 optimised environments  
 PART OF SLR

© Crown copyright and database rights (2024) Ordnance Survey 0100031673.  
 Contains public sector information licensed under the Open Government Licence v3.0.

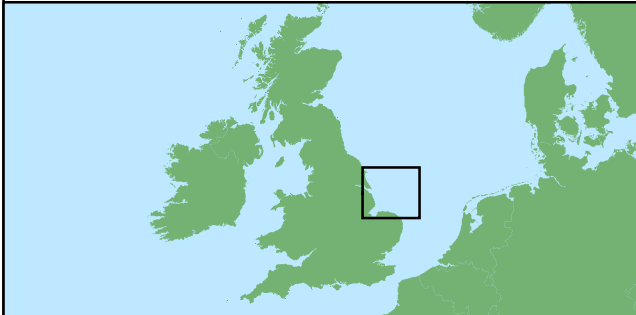
Document Path: P:\2021\12\1613\_OuterDowsing\GIS\211613\_GTR4\ES\OFFSHORE\0536\00012\_0677\_0\_211613\_ODOW\_ES\_SIVIA\_Fig17.23\_CZTV\_SheringhamShoalExt.mxd



Blade tip:	330m	Observer height:	2m
DTM:	OS T50 DTM	Surface features:	Excluded
DTM resolution:	50m	Earth curvature:	Included

### Legend

- ⊙ Viewpoints
  - Indicative Turbine Locations
  - Indicative Offshore Platforms
  - Indicative Offshore Reactive Compensation Platform (ORCP)
  - Array Area
  - Offshore Export Cable Corridor (ECC)
  - Offshore Reactive Compensation Platform (ORCP) Area
  - 10km Radii
  - 60km Study Area
  - Offshore Reactive Compensation Platform (ORCP) 30km Study Area
- Cumulative Wind Farm Status:
- Operational
  - Appeal/Application
- Cumulative Zone of Theoretical Visibility
- Outer Dowsing Theoretical Visibility
  - Dudgeon Ext Theoretical Visibility
  - Combined Theoretical Visibility



- Viewpoints:**
1. Spurn Head, near the Yorkshire Wildlife Trust Discovery Centre
  2. Donna Nook
  3. Saltfleetby-Theddlethorpe Dunes
  4. Mablethorpe
  5. Chapel Six Marshes
  6. Lincolnshire Wolds between Rigsby and Haugh
  7. Wells-next-to-the-Sea Beach
  8. Cley Beach
  9. Sheringham
  10. Sheringham Park, Gazebo
  11. Ferry Route Corridor (South West of Site)
  12. Ferry Route Corridor (North East of Site)

Coordinate System: WGS 1984 UTM Zone 31N  
 0 5 10 15 20 km  
 Scale: 1:600,000  
 A3 Page Size

Environmental Statement  
 Cumulative ZTV - Dudgeon Extension  
 Figure 17.24



Date: 12/03/2024  
 Produced By: OPEN  
 Revision: v0.4

**open** optimised environments  
 PART OF SLR

Contains ESRI Basemapping;

Document Path: P:\2021\12\1613 OuterDowsing\GIS\211613\_GTR4\ES\OFFSHORE\0536\00012\_06\78\_0\_211613\_ODOW\_ES\_S\VIA\_Fig17.24\_CZTV\_DudgeonExt.mxd